



## **Instruction Manual**

**TVS MSP 355  
Dot Matrix Printers**

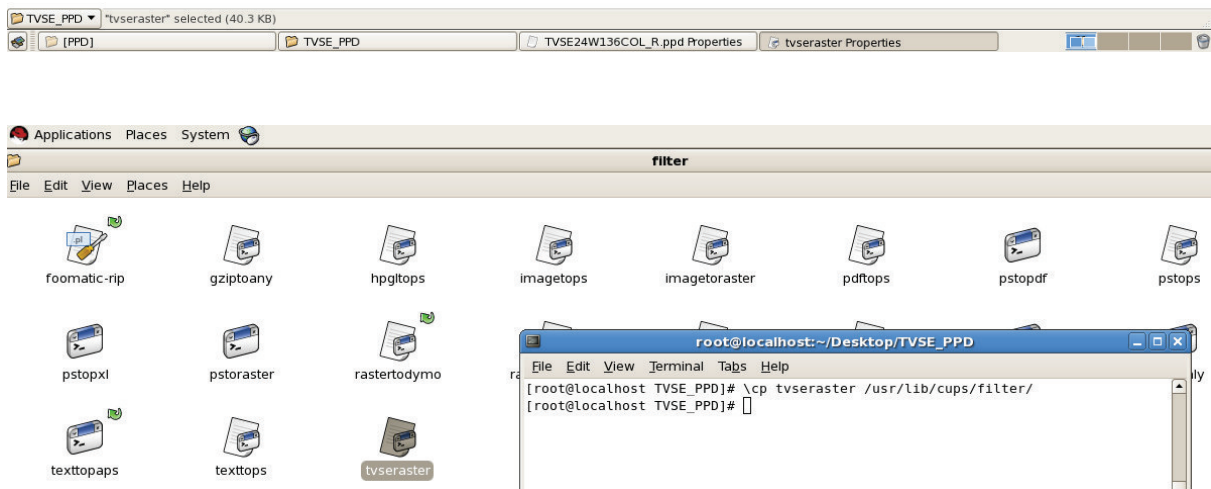
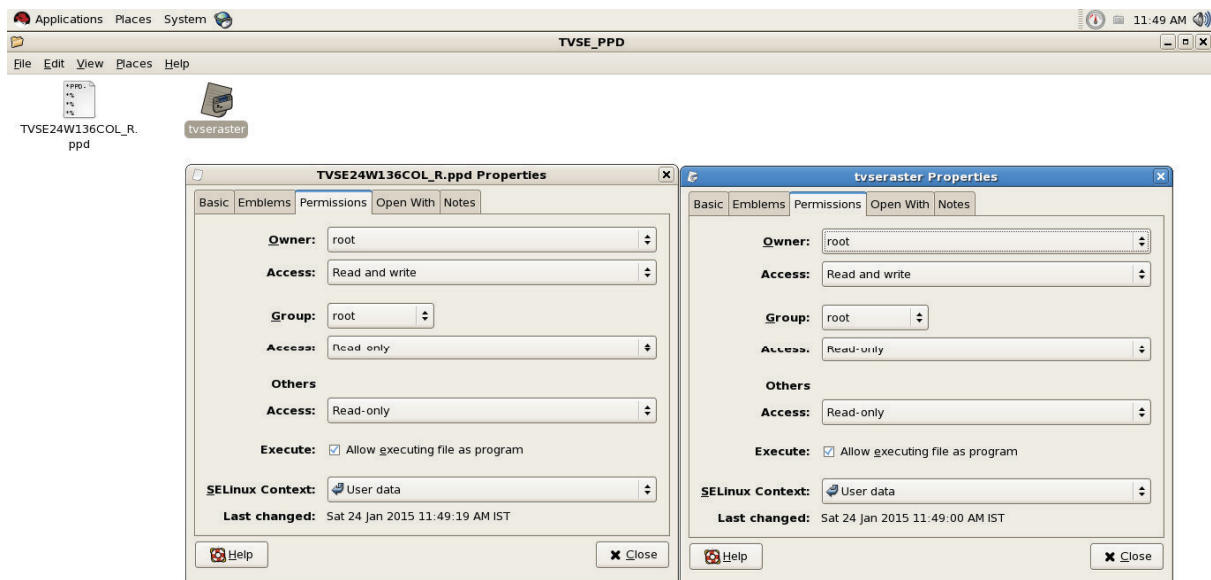
# CUPS DRIVER TVS-E MSP 355 Printer

## Installation Manual

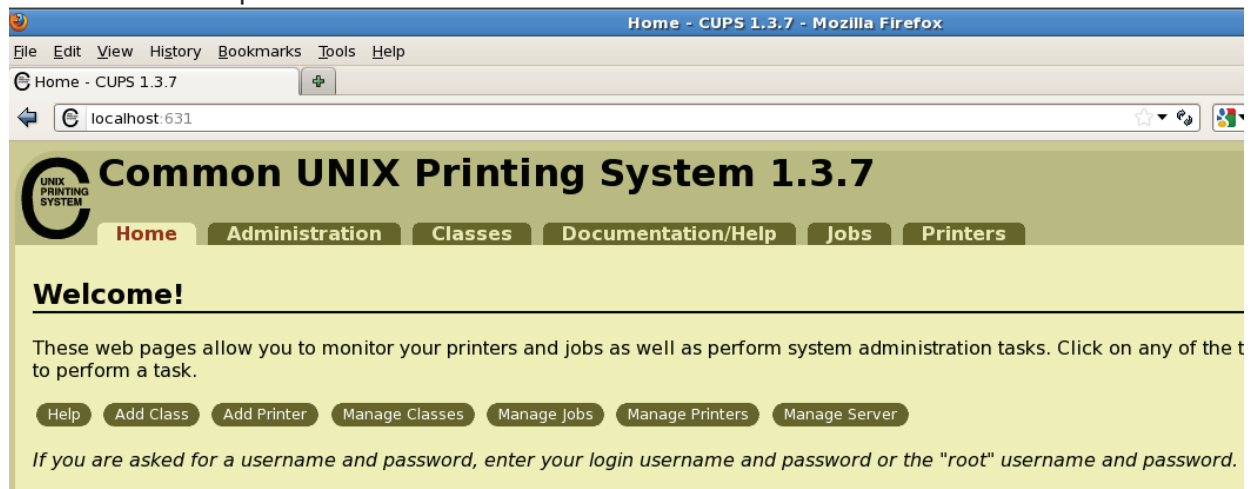
Let's discuss using screen shots in details.

### Installation of TVS-E MSP Dot Matrix Printer CUPS Driver Setup using localhost:631

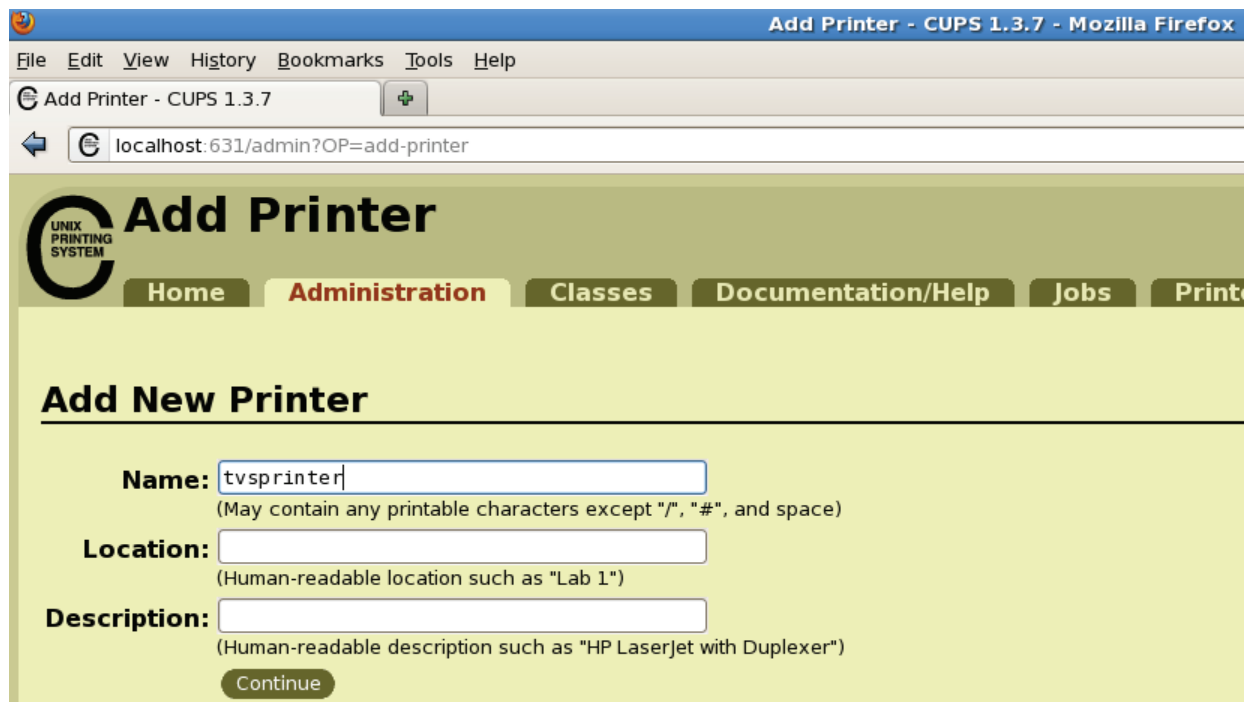
1. Must be login as **ROOT** user.
2. We must have **TVSE24W136COL\_R.ppd** and **tvseraster** filter.
3. Check execution permissions of TVSE24W136COL\_R.ppd , tvseraster filter file as below.
4. Open Terminal copy the "tvseraster" file to " /usr/lib/cups/filter/"  
Overwrite copy command execute in terminal -  
[root@in the location]# " \cp tvseraster /usr/lib/cups/filter/ "
5. Attach the printer with Parallel Port and Switch On printer



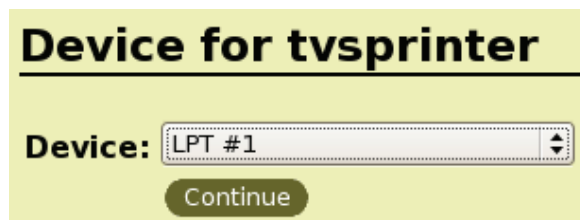
1. Here we install the printer using <http://localhost:631/> So click on given URL or copy the link and open it in Browser.



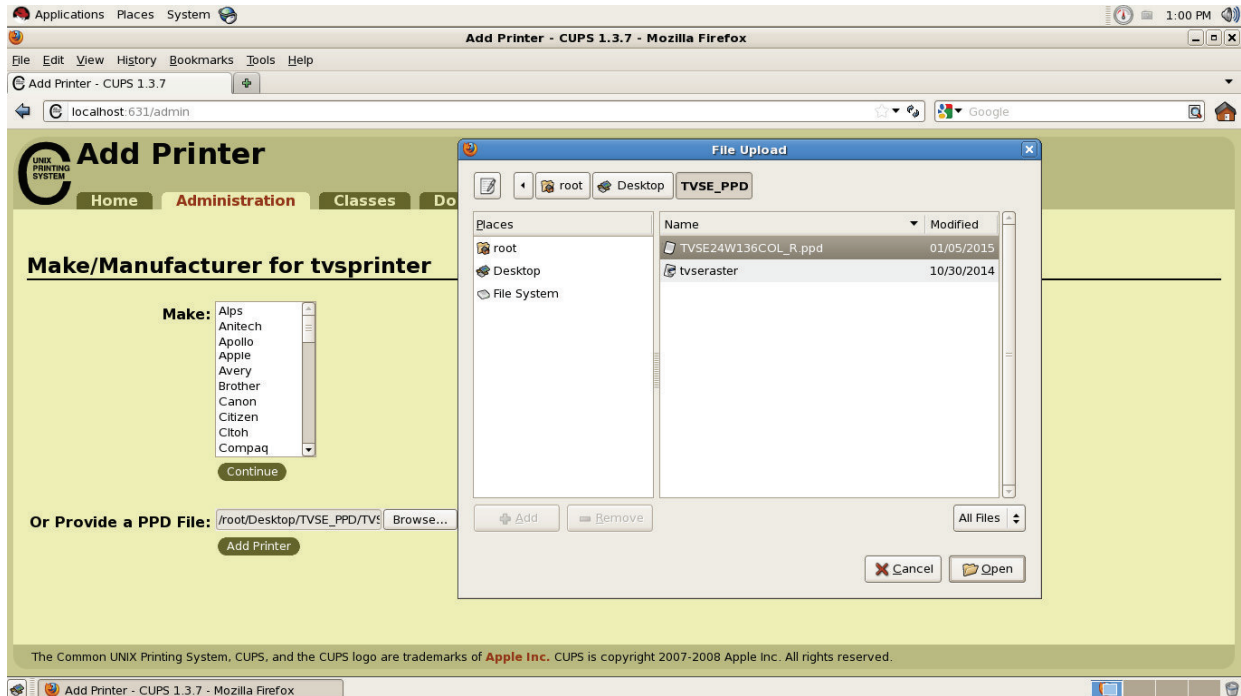
2. Click Add Printer, Type Name: " **tvspri**nter " and then click on 'Continue'.



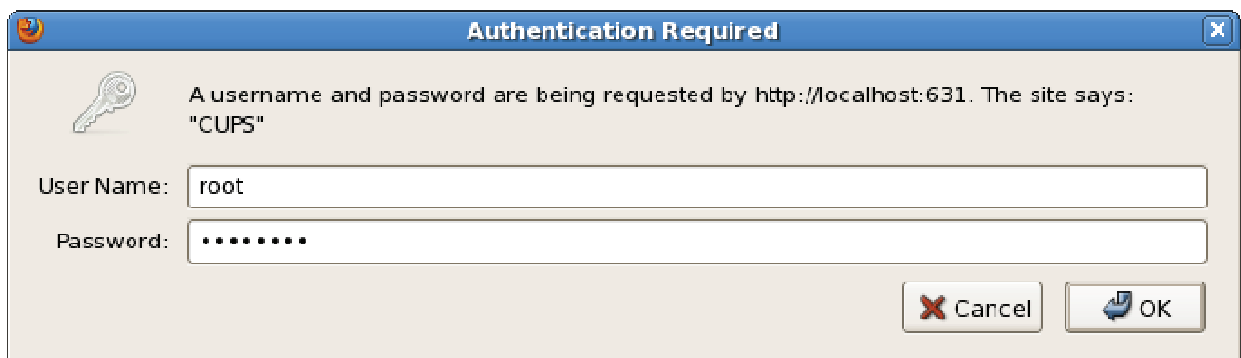
3. Select Device as " **LPT #1** " for parallel port and then click on 'Continue'.



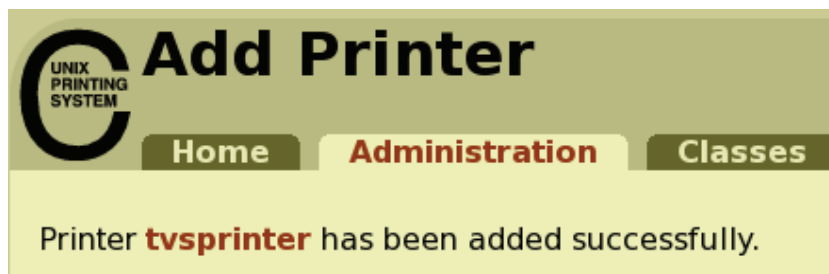
4. Click Browse & select PPD File from location “ TVSE24W136COL\_R.ppd “ then click open.



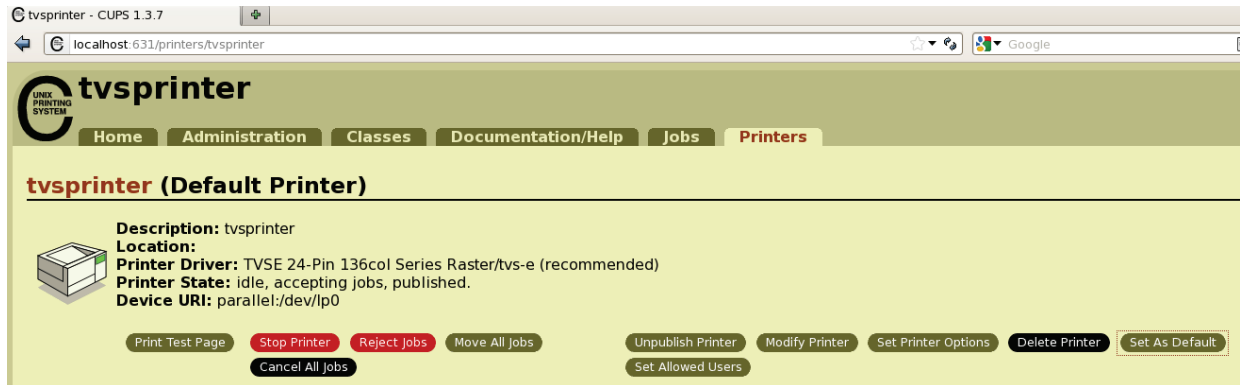
5. Click on ‘ Add Printer ’ & ask for user Name & Password please give “root“ : “root pwd”



6. Then got message as below Printer added successfully



7. Select the printer and click on “ Set As Default “



8. Then got message as below Printer made default printer



9. Select the printer and click on “ Set Printer Option “



10. Then got message as below select ' **Duplex** : ' as " **Bi-direction** " and Click on button ' Set Printer Option '



**Set Printer Options**

Home Administration Classes

**tvsprinter: General**

Page Size: US Letter

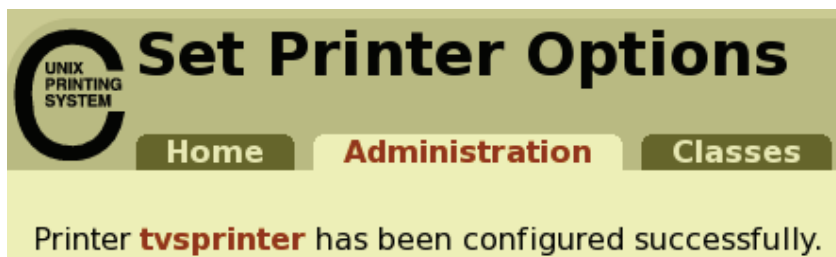
Print Quality: Quick Print

Media Source: Automatic

Duplex: Bi-direction

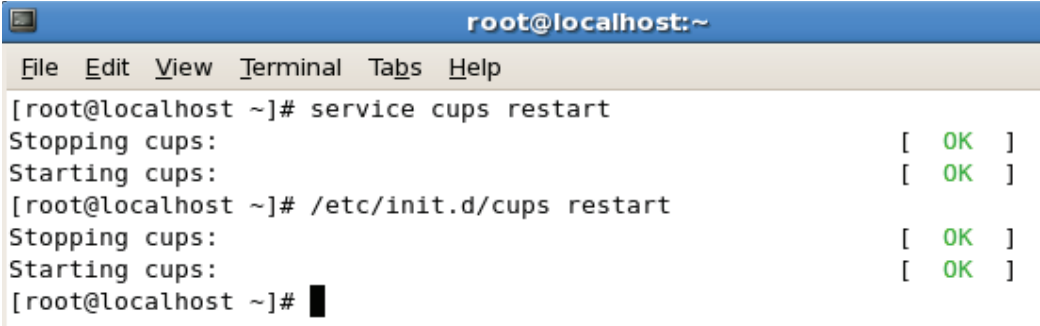
Set Printer Options

11. Then got message as below printer configured successfully.



12. Open the Terminal and restart the CUPS using the command

```
[root@]# " service cups restart "  
(OR)  
[root@]# " /etc/init.d/cups/restart "
```



```
root@localhost:~  
File Edit View Terminal Tabs Help  
[root@localhost ~]# service cups restart  
Stopping cups: [ OK ]  
Starting cups: [ OK ]  
[root@localhost ~]# /etc/init.d/cups restart  
Stopping cups: [ OK ]  
Starting cups: [ OK ]  
[root@localhost ~]#
```

13. Click on “ **Print Test Page** ” on the tvsprinter which Install



14. Then the printer start printing as below in image

